

Inhaltsverzeichnis

Über dieses Buch	4
-------------------------------	---

Alt-Saxophon

WAKE ME UP – Swing –	6
WAKE ME UP (vereinfachte Version)	8
SNOWBALL FIGHT – HipPop –	10
SNOWBALL FIGHT (vereinfachte Version).....	12
RED – Hip/Rock –	14
RED (vereinfachte Version)	16
KALIMBA – Latin –	18
KALIMBA (vereinfachte Version)	20
K-TOWN WEST – Shuffle/Swing –	22
K-TOWN WEST (vereinfachte Version).....	26
OPEN END – Popjazz –	30
OPEN END (vereinfachte Version).....	32

Tenor-Saxophon

WAKE ME UP – Swing –	34
WAKE ME UP (vereinfachte Version)	36
SNOWBALL FIGHT – HipPop –	38
SNOWBALL FIGHT (vereinfachte Version).....	40
RED – Hip/Rock –	42
RED (vereinfachte Version)	44
KALIMBA – Latin –	46
KALIMBA (vereinfachte Version)	48
K-TOWN WEST – Shuffle/Swing –	50
K-TOWN WEST (vereinfachte Version).....	54
OPEN END – Popjazz –	58
OPEN END (vereinfachte Version).....	60

Lead Sheets

WAKE ME UP – Swing –	62
SNOWBALL FIGHT – HipPop –	64
RED – Hip/Rock –	66
KALIMBA – Latin –	68
K-TOWN WEST – Shuffle/Swing –	70
OPEN END – Popjazz –	72
AKKORDTABELLE	74

Diskographie Paul L. Schütt	75
--	----



Wake Me Up

CD 1 Track 1 (Vollplayback)
 CD 1 Track 8 (Halbplayback)
 CD 2 Track 1 (SuperSlow)
 CD 1/2 Track 7 (Stimmöne B/A)

Swing

Paul L. Schütt

A B

G K O

47

B7 B7 E7 E7

51

A7 A7 D7 D7

H L P

55

G E7 Am7 D7 G E7 Am7 D7

59

Dm7 G7 C7 Cm7 G D7 G last time only

D.S. 2x

63

Q R

67

1.

71

2.

75

S

79

83

T

87

91

U

95

slow a tempo



Wake Me Up

(vereinfachte Version)

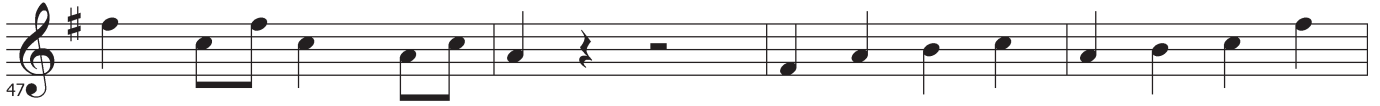
CD 1 Track 1 (Vollplayback)
 CD 1 Track 8 (Halbplayback)
 CD 2 Track 1 (SuperSlow)
 CD 1/2 Track 7 (Stimmöne B/A)

Swing

Paul L. Schütt

A B

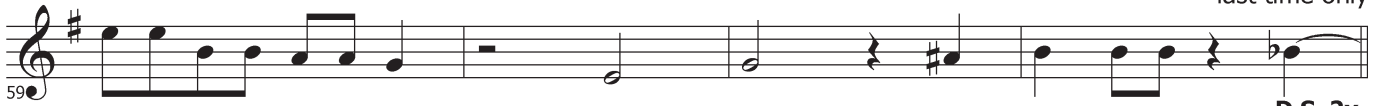
G K O



H L P



last time only

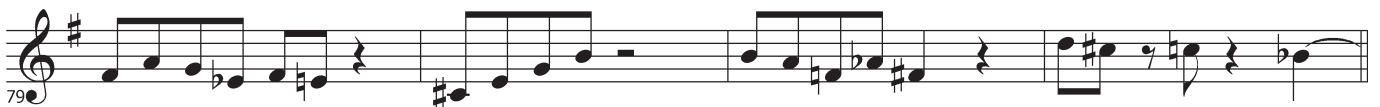


D.S. 2x

Q R



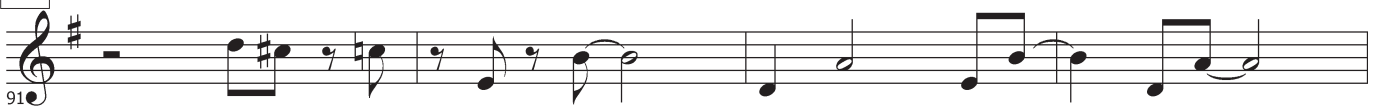
S



T



U



slow

a tempo

Wake Me Up

CD 1 Track 1 (Vollplayback)
CD 1 Track 8 (Halbplayback)
CD 2 Track 1 (SuperSlow)
CD 1/2 Track 7 (Stimmtonne B/A)

Swing

Paul L. Schütt

A B

„magic tones“

G K O

E7 E7 A7 A7

47

D7

D7

G7

G7

51

H L P

C A7 Dm7 G7 C A7 Dm7 G7

55

Gm7

C7

F7

Fm7

C

G7

C

last time only

59

D.S. 2x

Q R

63

1.

67

2.

71

S

75

79

T

83

87

U

91

95

slow

a tempo

Wake Me Up

CD 1 Track 1 (Vollplayback)
 CD 1 Track 8 (Halbplayback)
 CD 2 Track 1 (SuperSlow)
 CD 1/2 Track 7 (Stimmöne B/A)

Swing

A B

Paul L. Schütt

B^b G7 Cm7 F7 B^b G7 Cm7 F7

Fm7 B^b7 E^b7 E^bm7 1. B^b G7 Cm7 F7 B^b 2. B^b F7 B^b

C

D7 G7 C7 F7 B^b

D

G7 Cm7 F7 B^b G7 Cm7 F7

Fm7 B^b7 E^b7 E^bm7 B^b F7 B^b F7

Interlude

F7 F7 F7 F7 F7

F7 D13 E^b13 E13 F13 F+7

E F I J M N

B^b G7 Cm7 F7 B^b G7 Cm7 F7

Fm7 B^b7 E^b7 E^bm7 1. B^b G7 Cm7 F7 2. B^b F7 B^b

G K O

D7

G7

C7

F7

Musical staff with rhythmic notation (diagonal lines) for measures 1-8.

H L P

B^b

G7

Cm7

F7

B^b

G7

Cm7

F7

Musical staff with rhythmic notation (diagonal lines) for measures 9-16.

Fm7

B^b7

E^b7

E^bm7

B^b

F7

B^b

last x only

Musical staff with rhythmic notation (diagonal lines) for measures 17-24, ending with a note and an accent (>).

D.S. 2x

Q R

G7

Cm7

F7

B^b

G7

Cm7

F7

Musical staff with rhythmic notation (diagonal lines) for measures 25-32.

Fm7

B^b7

E^b7

E^bm7

1. B^b

G7

Cm7

F7

B^b

2. B^b

F7

B^b

Musical staff with rhythmic notation (diagonal lines) for measures 33-40, including first and second endings.

S

D7

G7

C7

F7

B^b

Musical staff with rhythmic notation (diagonal lines) for measures 41-48.

T

G7

Cm7

F7

B^b

G7

Cm7

F7

Musical staff with rhythmic notation (diagonal lines) for measures 49-56.

Fm7

B^b7

E^b7

E^bm7

B^b

F7

B^b

F7

Musical staff with rhythmic notation (diagonal lines) for measures 57-64.

U

F7

F7

F7

F7

F7

Musical staff with rhythmic notation (diagonal lines) for measures 65-72.

F7

D13

E^b13

E13

F13

F+7

B^b

Musical staff with rhythmic notation (diagonal lines) for measures 73-80.